

2022 ANNUAL REPORT

A YEAR OF GROWTH



SPECIAL EQUESTRIANS
THERAPEUTIC RIDING CENTER





MISSION

To improve the physical, mental and emotional well-being of individuals with disabilities through the equine experience.



A YEAR OF GROWTH

On behalf of the Special Equestrians leadership team we want to thank our community in helping us meet unimaginable goals throughout the last year.

In 2021 we celebrated getting back to our new normal. Our community supported us in navigating many hard challenges as we were faced with a global pandemic. Special Equestrians is proud to announce that 2022 was a year of growth for our organization. With the addition of new horses, new staff, new board members, new volunteers, new riders and new community partners, Special Equestrians was able to reach a record number of unduplicated individuals with equine-assisted therapies and activities. We are no longer striving for normalcy. We are focusing on continued growth and setting new goals that will allow us to continue to harness the healing power of horses for as many individuals as possible.

We would not be able to continue our mission without the support of our community, volunteers, riders, families and staff. We are forever grateful for their continued support. It has been a blessing to watch our Special Equestrians family grow and we are proud of all that has been accomplished in the last year, and we are excited to see what 2023 brings!

Allen Tate III

Janice Witt

Allen Tate

Janice Witt

Board Chair
Special Equestrians
Board of Directors

Executive Director
Special Equestrians

James and Bear THE PERFECT PAIR

In January of 2022, we welcomed an adorable little boy named James to Special Equestrians. James is now 5-years-old but was born prematurely at 23 weeks... He was diagnosed with cerebral palsy, but faces other challenges like being visually impaired and managing his balance, and he sometimes has trouble navigating spaces. James has made great strides this year thanks to the therapy he's received through Special Equestrians' hippotherapy program.

Hippotherapy provides James with a specialized form of occupational therapy using our horse Bear's movement as a therapy tool. "James doesn't even realize he's getting therapy," says his mom, Melissa. "He just thinks he's going to ride Bear." What does James like most about riding? "I love everything I do with Bear!" he shouts with glee.



While James receives many different types of therapies at school, Melissa says hippotherapy at Special Equestrians is the only therapy James looks forward to each week. "He lights up when he's in the barn."



ABOUT US

At Special Equestrians, we harness the healing power of horses to transform lives. Here, differences are embraced and individuality is celebrated.

Our programs are driven by the awareness that every person learns differently – and careful evaluation determines which activities, horse and instructional style are most likely to bring new competencies to a rider.

We operate year-round and our property features an indoor and outdoor arena, a therapy room, a 37-station Sensory Trail, and an observation lounge and classroom. We also offer off-site visits, and take our horses to schools and senior centers.

22
STAFF
MEMBERS

Our staff consists of full-time and part-time people, and they work tirelessly to ensure our barn, horses, and programs are run smoothly and efficiently. Their passion for SE's success is unwavering.

17
PROGRAM
HORSES

From miniature to draft, our horses come in every shape, size, and color. Our herd is specially trained to ensure our riders get the most out of their lessons, and we are so fortunate to have them as part of our programs.

350
PEOPLE
SERVED

On average, we see over 200 riders and 150 group participants in a given year - each one of them is just as special as the next.



WHO WE SERVE

Our riders and students come to us from all walks of life, and we are committed to serving anyone who can benefit from our services.

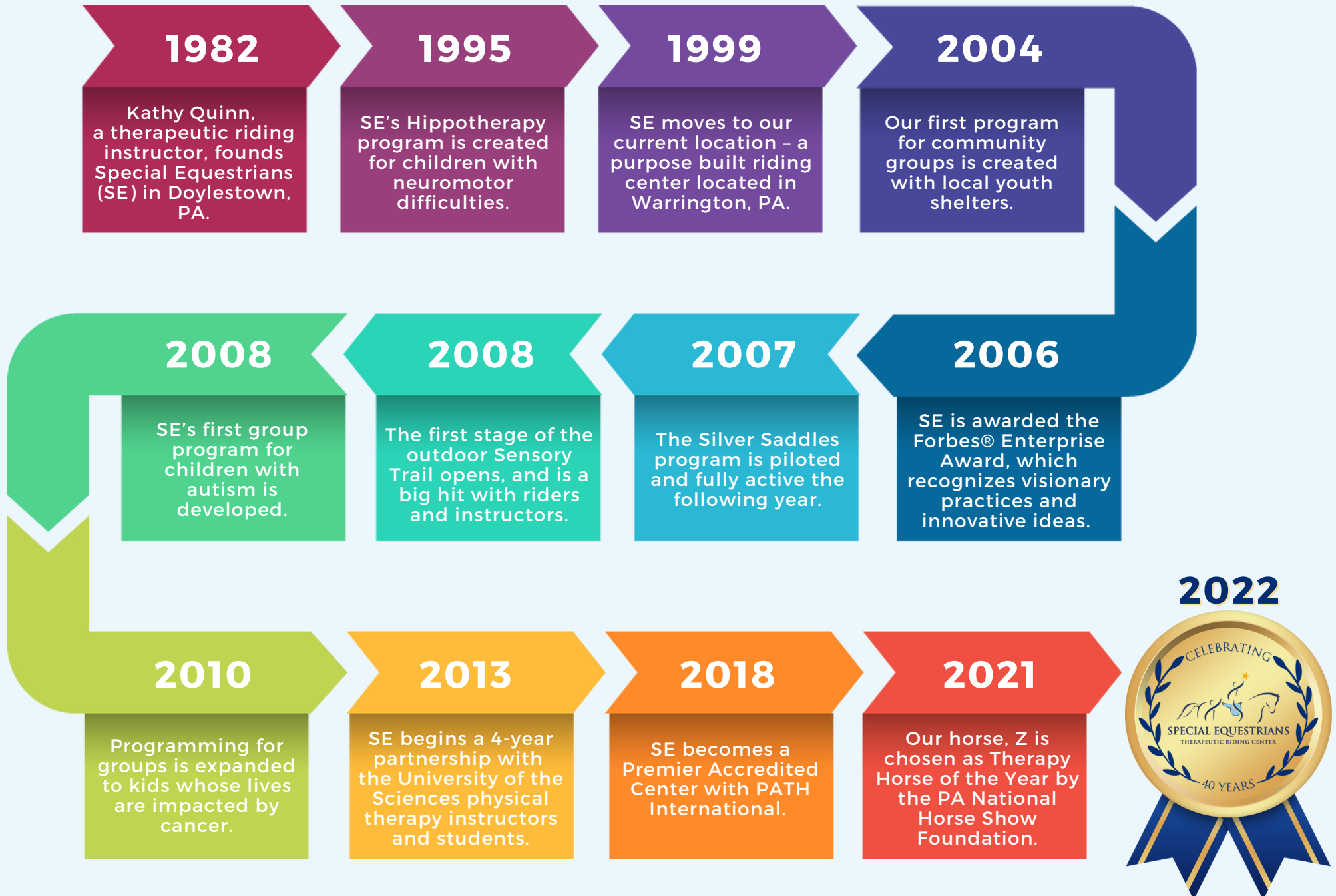
We offer therapeutic riding lessons for individuals who meet criteria for numerous diagnoses, including autism spectrum disorder, intellectual and development disabilities, ADHD, cerebral palsy, genetic disorders, brain injuries, in addition to cognitive and sensory dysfunction.

Through our group programs, we work with at-risk youth, students with autism and learning disabilities, women in recovery, children in residential foster care, senior living centers and cancer support groups.



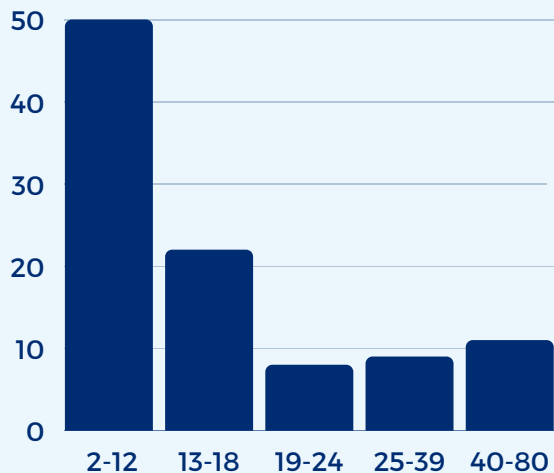
40TH ANNIVERSARY TIMELINE

Special Equestrians traces its roots to a volunteer therapist who, after seeing that there were few therapeutic or recreational activities available to individuals with disabilities, decided to create one.

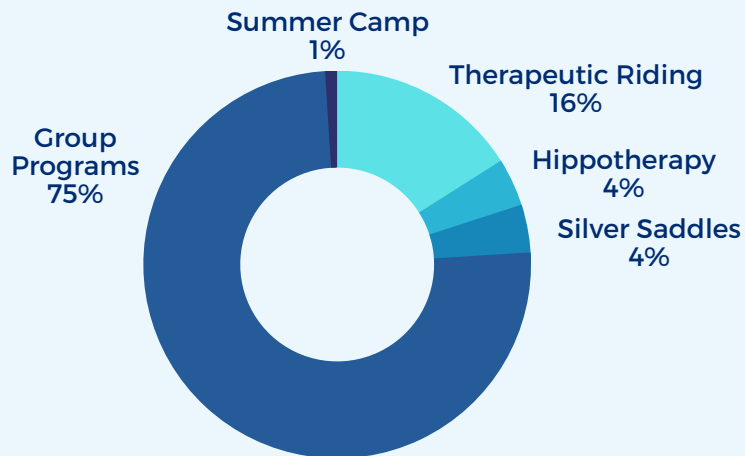


Program Participation

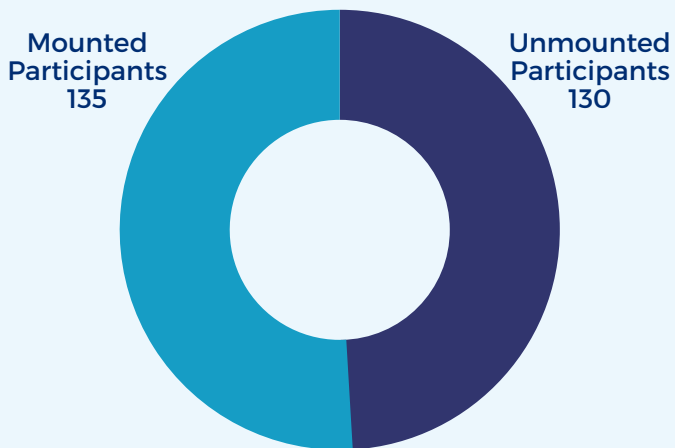
Ages By Percent



Lesson Types

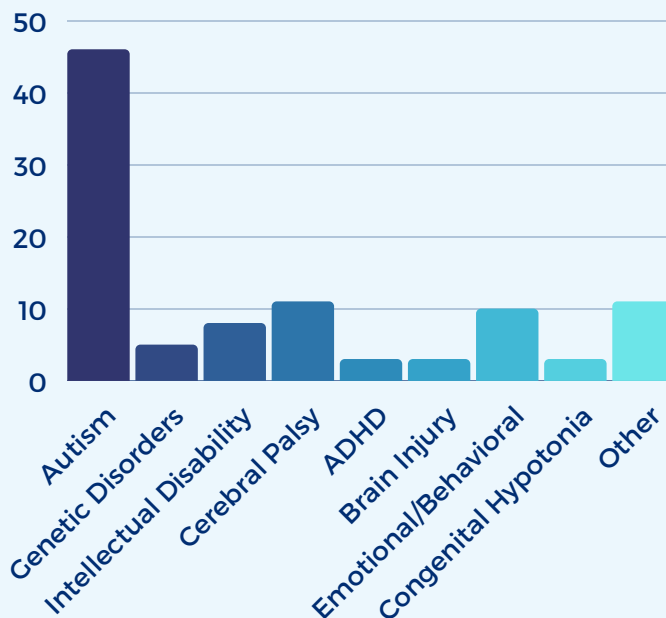


Group Lessons



Mounted - Onsite
Unmounted - Off-site

Key Diagnosis for Individual Lessons



Organization & Program Highlights



Discovered new ways to fundraise and support the community



We welcomed our NEW EXECUTIVE DIRECTOR, Janice Witt



Hosted our first ever Sippin' For Special Equestrians fundraiser at Bishop Estate Winery. It was a huge success and very well attended.



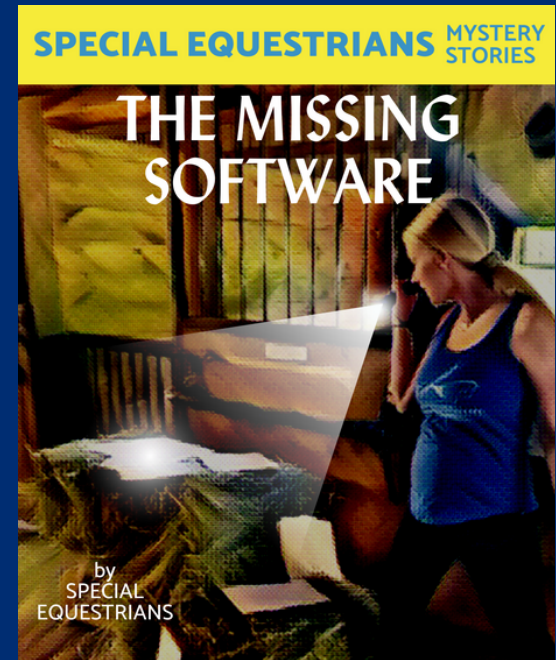
We welcomed Bailey, a welsh quarter horse cross to the herd!



Created and introduced our new Kissing Booth!



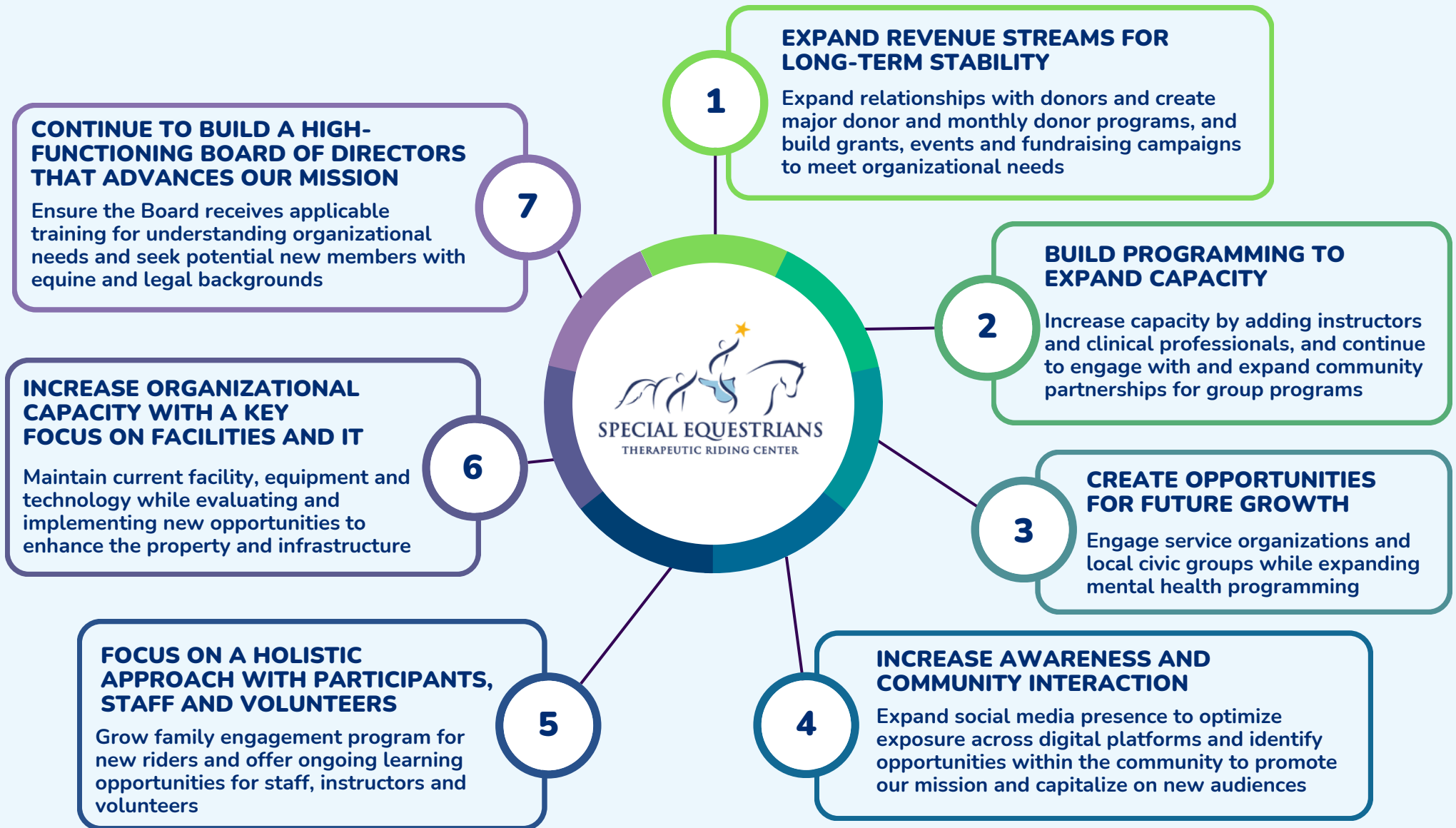
Attended our first ever Warrington Farmer's Markets and Warrington Day - this allowed us to interact with our community in a new and fun way!



We were awarded a USEF Opportunity Fund Grant, and they encouraged us to be creative with our application! The grant helped us to purchase and implement our new program and donor database, Equi-Force!

STRATEGIC PLAN

GOALS AND STRATEGIES FOR 2023-2025

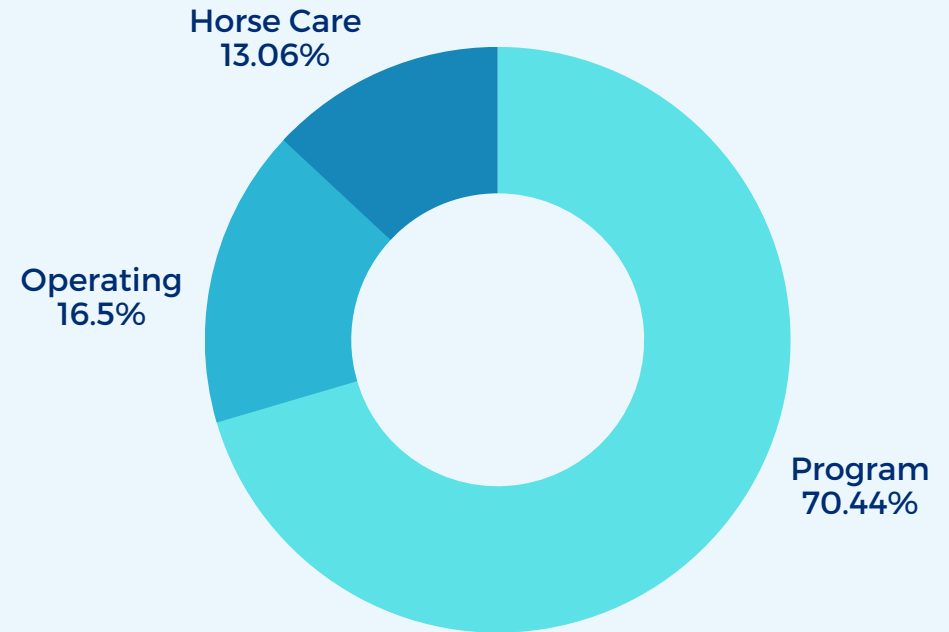




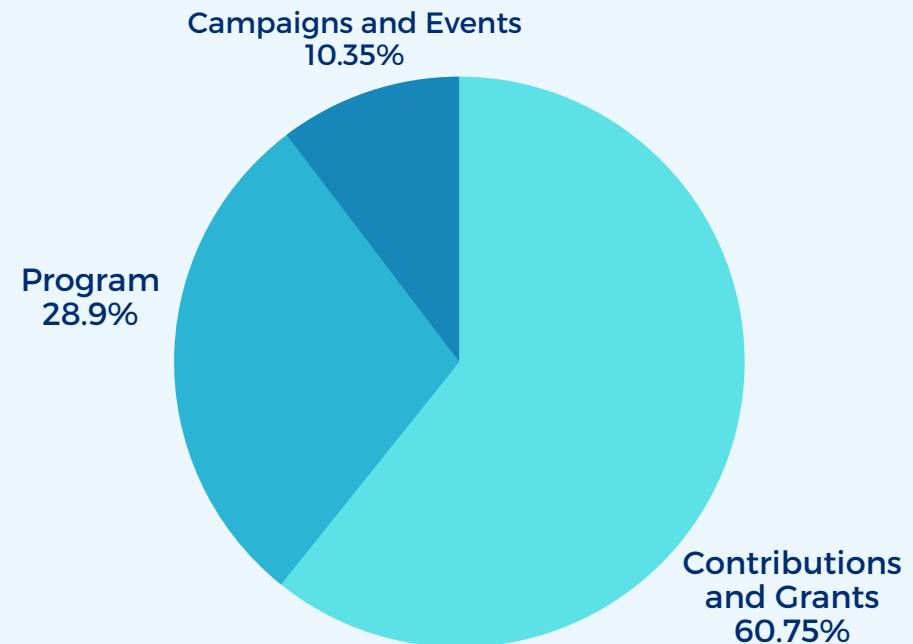
Financials



Expenses



Support and Revenue



Volunteers

Team work makes the dream work!

Our dedicated team of volunteers works 7 days a week, 365 days a year. Their passion, drive, and hard-work are the backbone of our success. Whether it's assisting with students and horses in lessons, working around the barn, helping with special events or providing administrative support, **they make every day special!**

125
Volunteers
8,020
Hours Logged



Volunteer Highlights

Say HI to HEATHER! Heather's love of horses and desire to volunteer brought her to Special Equestrians about a year and a half ago. Her favorite part about volunteering with us (other than cuddling with Rolex) is watching the students make progress in their lessons. Heather's positive attitude and love for horses make her a great addition to our volunteer crew. We are so lucky to have her!



Say HELLO to FRANK! Frank joined us as a volunteer last December and you can usually find him at the barn on Tuesdays and Fridays - but also on Mondays, Wednesdays, Thursdays and even some weekends. In short, Frank loves being at the barn, and we love having him! From the regular barn work of mucking stalls to turning out and grooming, to off-site visits and fundraising events, Frank is there with a smile on his face ready to go. When we asked him what his favorite part of volunteering was, it came as no shock that he said he loves it all. He responded, "I absolutely love the horses and the people at SE, and the opportunity to learn something every time I work with Laura."



Say HELLO to MAISY! Maisy started volunteering with us in February of 2020 and you can find her at the barn a few days a week - she even helps out during Summer Camp! "Seeing the students smile and getting high-fived makes all of my time worth it," she says. Her favorite part of volunteering is getting to see the weekly improvement in the students she works with regularly. "Even after a week I often see the students becoming more confident and surer in their capabilities." We are so happy to have Maisy as part of our volunteer crew!



Staff Highlights

Addison grew up surrounded by horses and he rekindled his love and passion for working with them in college after discovering the field of Equine Assisted Therapy. Addison is a recent graduate from the University of Vermont with a B.S. in Animal Science and a minor in Psychological Science. He currently works on our barn staff but is filling clinical hours in order to complete a PATH Mental Health certification! "Being able to get to know the staff and the horses at SE has been extremely rewarding and continues to help me grow as a horseman and advocate for Equines. I truly am enjoying being part of the SE family as we continue to see equine therapy on the rise as a universal therapeutic option and look forward to interacting more with students and the lesson space, in the coming year." When Addison isn't in the barn, you'll find him hiking, skiing, golfing, and playing the piano.



Megan has been an occupational therapist for about 9 years, and has been an avid horse woman for most of her life. Megan provides hippotherapy for our students a few nights a week, and you might recognize her from our Annual Appeal Video, as she is James' instructor. "I love that SE allows me to combine my passions of working with people and horses in a therapeutic environment. I feel privileged to be a part of an organization that provides people with varying abilities and backgrounds access to horses." When Megan is not at SE you can find her at home, or splashing in the waves down the shore with her daughters, husband, and dog.



Lara has been teaching therapeutic and advanced dressage for over 13 years, and has been a PATH Certified Riding Instructor for 10 years. Aside from holding a BS in Equine Science, she also holds a masters in Animal Science, an MBA, and is halfway through the completion of a doctoral degree in business leadership. "Its difficult to put into words how much I love Special Equestrians. Our level of commitment to improving the quality of lives for our riders through a positive, friendly, and welcoming environment is truly unmatched. SE is the golden standard that all therapy barns should strive to achieve and I am completely honored and humbled to get to be a part of such an incredible organization."



Thank You

A Year of Growth, Dreaming Big

With the help and support of our families, volunteers, staff and community in 2022, we were able to reach heights that not that long ago, seemed out of our grasp.

We remain dedicated to our mission of improving the physical, mental and emotional well-being of individuals with disabilities through the equine experience – and we can't wait to see what the future holds for our programs and riders.

Thank you for your support and for always believing in the work we do.





Special Equestrians
 2800 Street Road, P.O. Box 1001
 Warrington, PA 18976
 215-918-1001
info@specialequestrians.org
www.specialequestrians.org

